

CERTIFICATE OF LOCATION OF GOVERNMENT CORNER

North Quarter Corner of Section 18, Township 113, Range 16, P.M.

STATE OF MINNESOTA, County of Goodhue

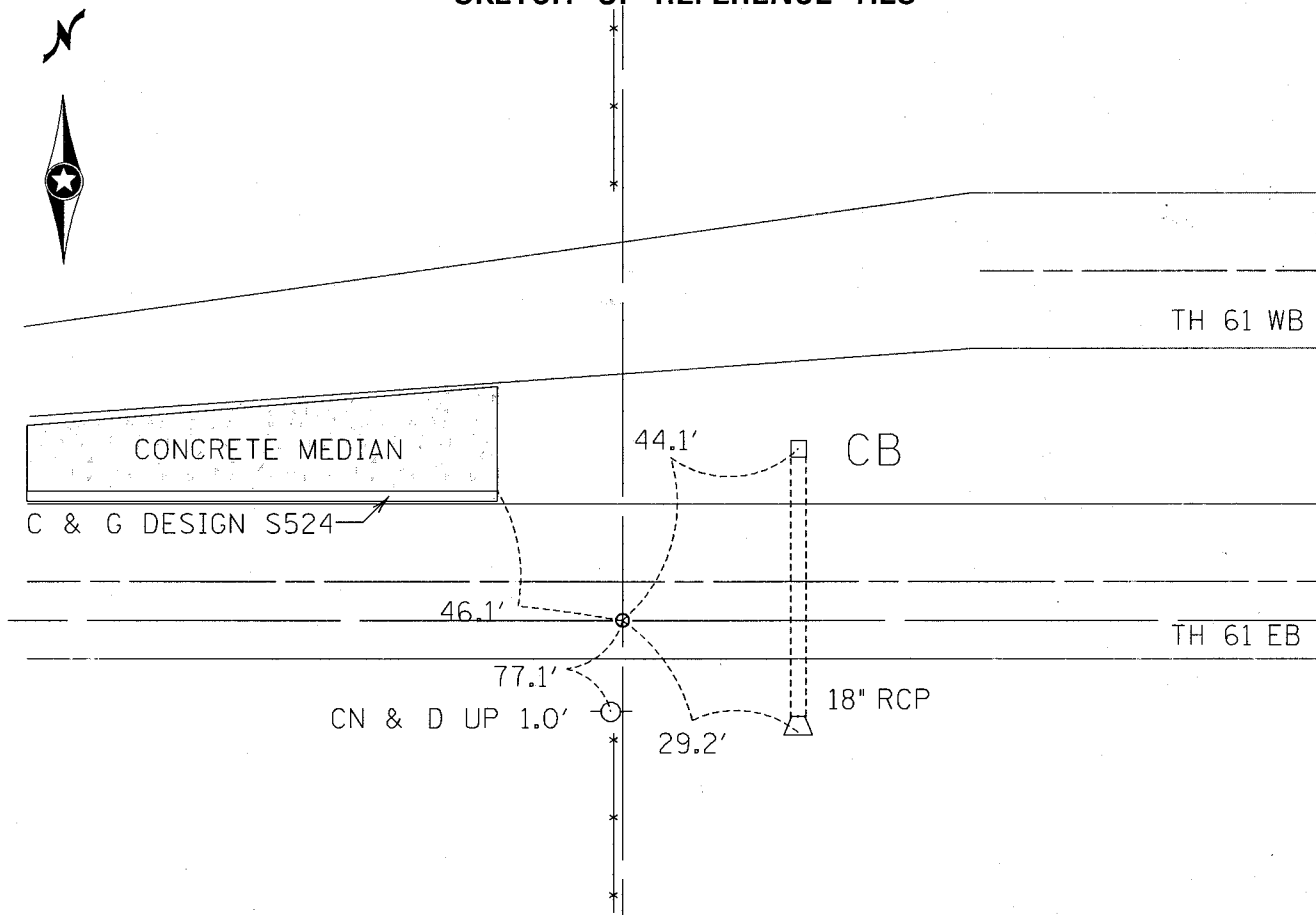
At the corner location shown on the sketch:

☐ On _____ found a _____
DATE

☐ left monument as found, ☐ lowered monument, ☐ removed monument (explain)

☒ On 7/28/99 placed a 2" x 2" x 30" Square Pipe with 4" Cast Iron Cap
DATE

SKETCH OF REFERENCE TIES



Statement of evidence relative to this corner location is on back of page.

I hereby certify that this document and the data contained herein was prepared by me or under my direct supervision.

David A. Briggs
SIGNATURE

2/9/01
DATE

Registration No. 21199

☒ Land Surveyor, ☐ Professional Engineer
☐ County Surveyor, ☐ County Engineer

OFFICE OF THE COUNTY RECORDER

County of Goodhue

I hereby certify that this document was filed in the Co. Recorder's office at 2:30 P.M. on the 26th day of March A.D., 2001

County Recorder *Jean M. Danker*

By _____, Deputy

DOCUMENT NO. _____